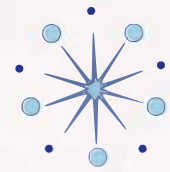




Kohler Fellows @ WID

Taking Science-Art Fusion to the Next Level



Who are the Kohler Fellows?

Marie Christine Kohler Fellows @ WID are graduate students selected on the strength of their creative abilities and their commitment to contribute to interdisciplinary thought. Kohler Fellows work and collaborate within the Illuminating Discovery Hub at the Wisconsin Institute for Discovery (WID). Fellows connect across the arts and sciences (within WID, campus, and the broader community) through a range of events and projects.

The Kohler Fellow 2021 Experience:

- 2021 Kohler Fellows are appointed for one year
- Science and Art Kohler Fellows each receive a \$750 stipend per semester
- Science and Art Fellows are paired together to create a science art fusion project:
 - Science-art fusion projects will be funded between \$3,000 - \$6,000, per project, based on proposed project budget

Kohler Fellow expectations:

- Engage within WID community and connect with students, fellows and faculty
- Serve as ambassadors for WID in the university community - making connections between WIDites and the rest of campus
- Participate in Kohler Fellow scheduled meetings and events
- Science-art activities
 - Art Fellows will design and implement a science-art fusion project in collaboration with a science fellow partner
 - Fellows will be expected to support each other's projects
 - Fellows will provide textual, pictorial, or cinematic summary of each project/event to Illuminating Discovery Hub leadership for event communications and website marketing

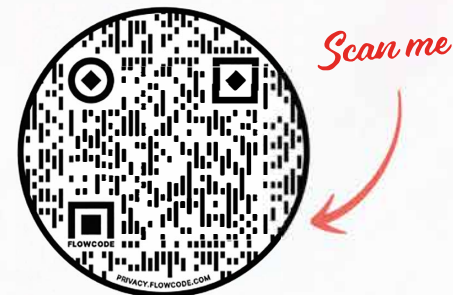
2021 Cohort Focus

The Marie Christine Kohler Fellows @ WID 2021 cohort will pair science fellows with art fellows to nucleate around interdisciplinary thought and the creation of science-art fusion projects and/or events.

We are accepting up to two artists and up to two scientists for the 2021-2022 fellowship.

Application Requirements:

- Applicants must be a graduate student during the time of their fellowship
- The Science Fellow application is open to all campus STEM departments
- Art Fellow application is open to all of campus art departments spanning the School of Education, School of Music, School of Human Ecology, College of Letters and Science. We encourage a diverse range of artists to apply (performance, dance, creative writing, arts administration, etc.)



Scientist and Artist Applications

Opens: February 22, 2021

Closes: May 15, 2021

Selections: June 15, 2021